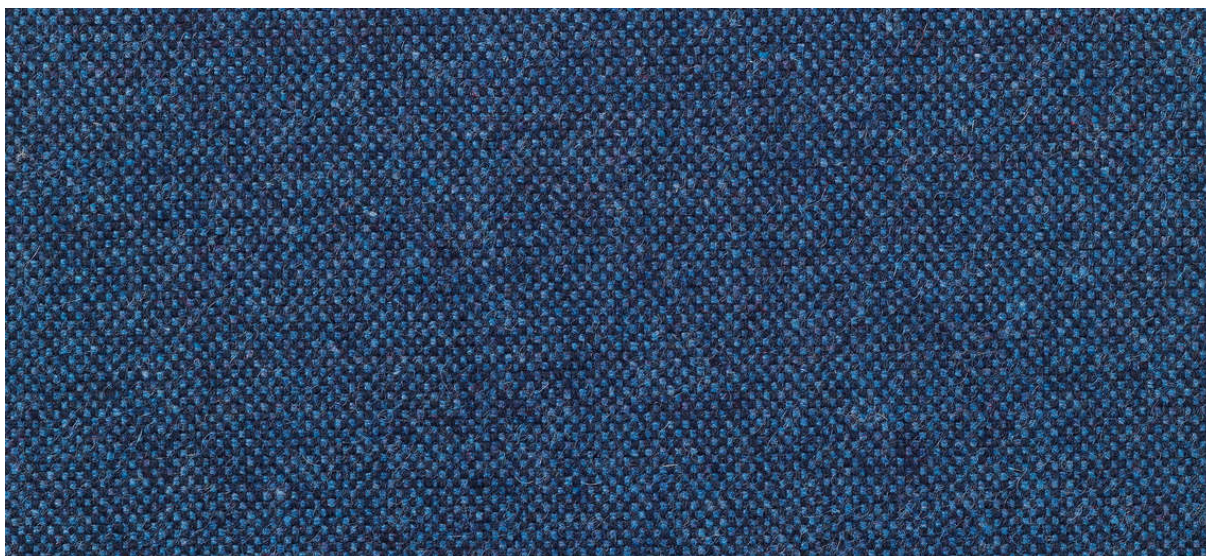


wolin

7050.01 - 7050.47



binder

upholstery 01

description

felted fine woven, wool quality, in a wide range of plain and mélangé colors

composition

75% wool / 20% polyester / 5% polyamide

width

± 150 cm, ± 59 inches

weight

± 638 gr/m¹, ± 21 oz/yd¹ fabrics

flame retardancy

EN 1021/1-2

BS 5852, crib 5

NF P 92/503-507, M2

DIN 4102, B2

IMO 2010 FTP part 8

UNI 9175, classe 1

Cal TB 117

NFPA 260, class 1

abrasion

ISO 12947-2

>100.000 rubs martindale

ASTM D4157

100.000 double rubs wyzenbeek

pilling

ISO 12945-2

3-4 (scale 1-5)

ASTM D3511

4 (scale 1-5)

colorfastness to crocking

ISO 105-X12

wet 4-5 / dry 4-5 (scale 1-5)

AATC 8

wet 4-5 / dry 5 (scale 1-5)

colorfastness to light

ISO 105-B02

6 (scale 1-8)

AATCC 16.3: 40 hours

4 (scale 1-5)

seam slippage

ISO 13936 - 2

warp 3 mm / weft 3.4 mm

ASTM D4034

warp 82 lbf / weft 81 lbf

care



wolin

7050.01 - 7050.47

