

# valencia

1039.01 - 1039.28



collection

**wallcovering**

**03**

**vinyl**

description

**texture made of pressed wood fibre in metallic hues**

composition

**vinyl finishing coat on a woven cotton backing**

width

**± 130 cm, ± 51 inches**

weight

**± 350 gr/m<sup>2</sup>, ± 15 oz. lin. yd.**

sound absorption

**alphaw 0.15**

flame retardancy

**B - s1 - d0**



**vinyl**  
COMMITTED TO  
SUSTAINABLE DEVELOPMENT



EN 15102:2007+A1:2011  
12  
1104/305-2011 (18-11-2015)  
wallcovering

REACTION TO FIRE CLASS: EN 13501-1  
REACTION OF FORMALDEHYDE: EN 12149  
RELEASE OF HEAVY METALS: EN 12149  
RELEASE OF VINYL CHLORIDE MONOMER: EN 12149



Produced in Italy

# valencia

1039.01 - 1039.28

---



1039.17



1039.16



1039.14



1039.15



1039.13



1039.03



1039.02



1039.04



1039.01



1039.26



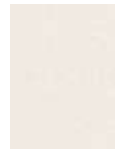
1039.25



1039.19



1039.20



1039.24



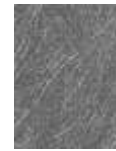
1039.06



1039.09



1039.28



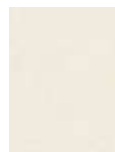
1039.08



1039.23



1039.22



1039.18



1039.21



1039.12



1039.11



1039.10



1039.05



1039.07



1039.27