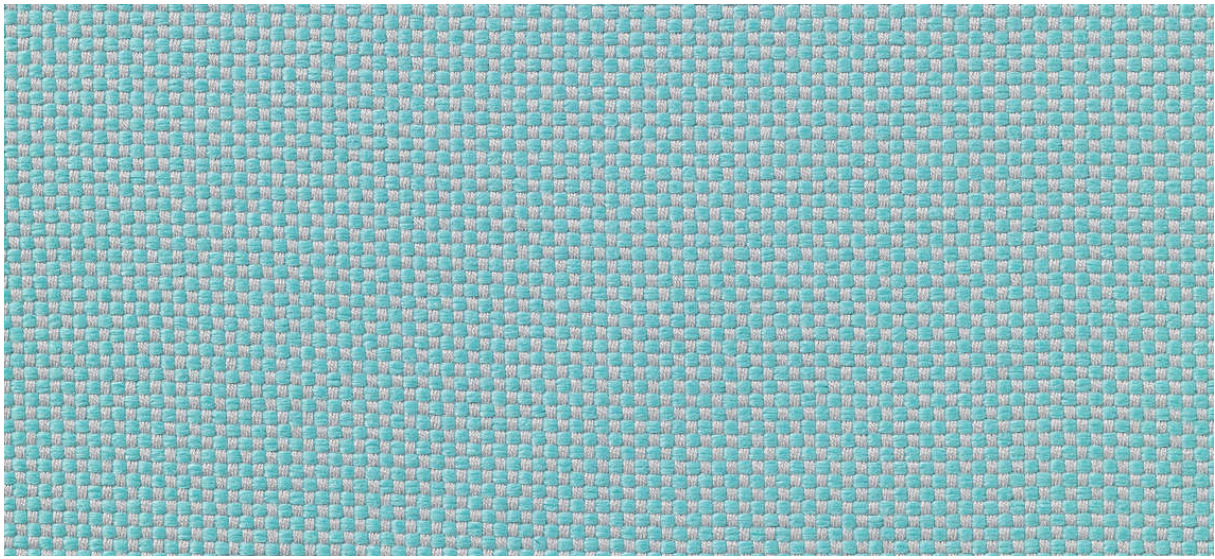


samar

7052.01 - 7052.51



binder

upholstery 01

description

chequered weave

composition

100% flame retardant polyester

width

± 140 cm, ± 55 inches

weight

± 663 gr/m¹, ± 21 oz/yd¹ fabrics

flame retardancy

EN 1021/1-2

BS 5852, crib 5

NF P 92/503-507, M1

DIN 4102, B1

IMO 2010 FTP part 8

UNI 9175, classe 1 IM

Cal TB 117

abrasion

ISO 12947-2

>50.000 rubs martindale

ASTM D4157

42.000 double rubs wyzenbeek

pilling

ISO 12945-2

4-5 (scale 1-5)

ASTM D3511

5 (scale 1-5)

colorfastness to crocking

ISO 105-X12

wet 4-5 / dry 4-5 (scale 1-5)

AATC 8

wet 5 / dry 5 (scale 1-5)

colorfastness to light

ISO 105-B02

6 (scale 1-8)

AATCC 16.3: 40 hours

4 (scale 1-5)

seam slippage

ISO 13936 - 2

warp 3 mm / weft 2 mm

ASTM D4034

warp 99 lbf / weft 81 lbf

care



shrinkage: warp -1.6% / weft -1%



shrinkage: warp -3% / weft -1.4%



samar

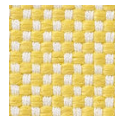
7052.01 - 7052.51



7052.01



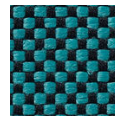
7052.02



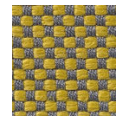
7052.03



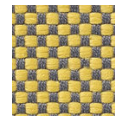
7052.04



7052.05



7052.06



7052.07



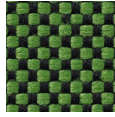
7052.08



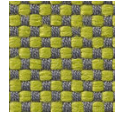
7052.09



7052.10



7052.11



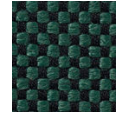
7052.12



7052.13



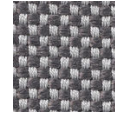
7052.14



7052.15



7052.16



7052.17



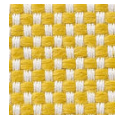
7052.18



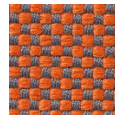
7052.19



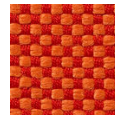
7052.20



7052.21



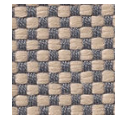
7052.22



7052.23



7052.24



7052.25



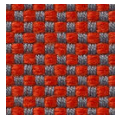
7052.26



7052.27



7052.28



7052.29



7052.30



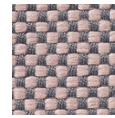
7052.31



7052.32



7052.33



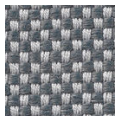
7052.34



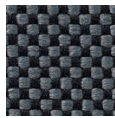
7052.35



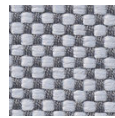
7052.36



7052.37



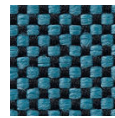
7052.38



7052.39



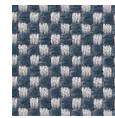
7052.40



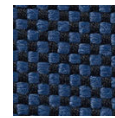
7052.41



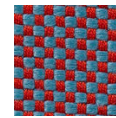
7052.42



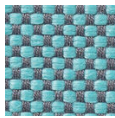
7052.43



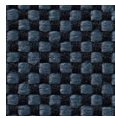
7052.44



7052.45



7052.46



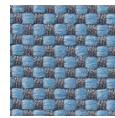
7052.47



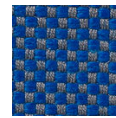
7052.48



7052.49



7052.50



7052.51