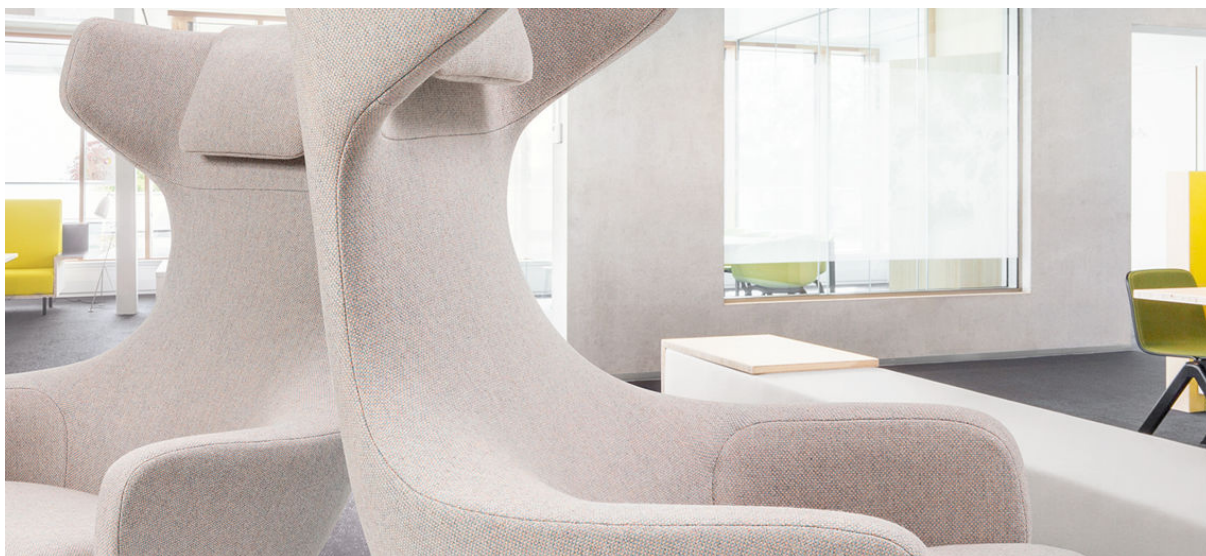


lamu

7051.01 - 7051.30



binder

upholstery 01

description

structured felted wool quality

composition

75% wool / 25% polyester

width

± 150 cm, ± 59 inches

weight

± 660 gr/m¹, ± 21 oz/yd¹ fabrics

flame retardancy

EN 1021/1-2

BS 5852, crib 5

NF P 92/503-507, M2

DIN 4102, B2

IMO 2010 FTP part 8

UNI 9175, classe 1

Cal TB 117

abrasion

ISO 12947-2

>100.000 rubs martindale

ASTM D4157

>30.000 double rubs wyzenbeek

pilling

ISO 12945-2

4 (scale 1-5)

ASTM D3511

3 (scale 1-5)

colorfastness to crocking

ISO 105-X12

wet 5 / dry 5 (scale 1-5)

AATC 8

wet 5 / dry 5 (scale 1-5)

colorfastness to light

ISO 105-B02

5 (scale 1-8)

AATCC 16.3: 40 hours

5 (scale 1-5)

seam slippage

ISO 13936 - 2

warp 3.5 mm / weft 3.5 mm

ASTM D4034

warp 26 lbf / weft 26 lbf

care



lamu

7051.01 - 7051.30



7051.01



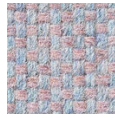
7051.02



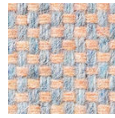
7051.03



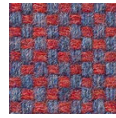
7051.04



7051.05



7051.06



7051.07



7051.08



7051.09



7051.10



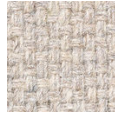
7051.11



7051.12



7051.13



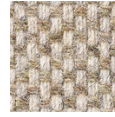
7051.14



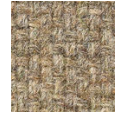
7051.15



7051.16



7051.17



7051.18



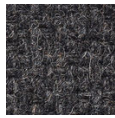
7051.19



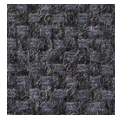
7051.20



7051.21



7051.22



7051.23



7051.24



7051.25



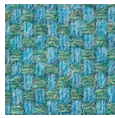
7051.26



7051.27



7051.28



7051.29



7051.30