

fuga

7047.01 - 7047.26



binder

upholstery 02

description

two toned woven chenille in contemporary colors

composition

100% flame retardant polyester

width

± 135 cm, ± 53 inches

weight

± 807 gr/m¹, ± 26 oz/yd¹ fabrics

flame retardancy

EN 1021/ 1- 2

BS 5852, crib 5

NF P 92 / 503 - 507, M1

DIN 4102, B1

IMO 2010 FTP part 8

UNI 9175, classe 1

Cal TB 117

abrasion

ISO 12947-2

75.000 rubs martindale

ASTM D4157

40.000 double rubs wyzenbeek

pilling

ISO 12945-2

4-5 (scale 1-5)

ASTM D3511

5 (scale 1-5)

colorfastness to crocking

ISO 105-X12

wet 4-5 / dry 4-5 (scale 1-5)

AATCC 8

wet 5 / dry 5 (scale 1-5)

colorfastness to light

ISO 105-B02

6-7 (scale 1-8)

AATCC 16.3: 40 hours

5 (scale 1-8)

seam slippage

ISO 13936-2

warp 4.7 mm/ weft 3 mm

ASTM D4034

warp 41 lbf / weft 100 lbf

care



shrinkage: warp -1.6% / weft -1.6%

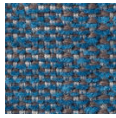


shrinkage: warp -1.0% / weft -3.1%



fuga

7047.01 - 7047.26



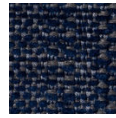
7047.01



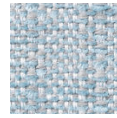
7047.02



7047.03



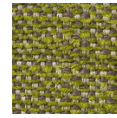
7047.04



7047.05



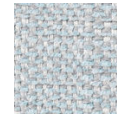
7047.06



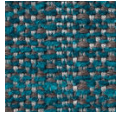
7047.07



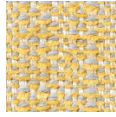
7047.08



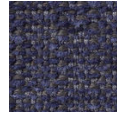
7047.09



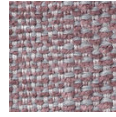
7047.10



7047.11



7047.12



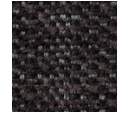
7047.13



7047.14



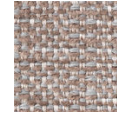
7047.15



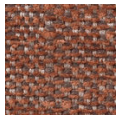
7047.16



7047.17



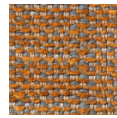
7047.18



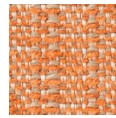
7047.19



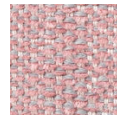
7047.20



7047.21



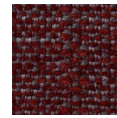
7047.22



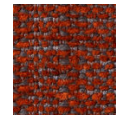
7047.23



7047.24



7047.25



7047.26