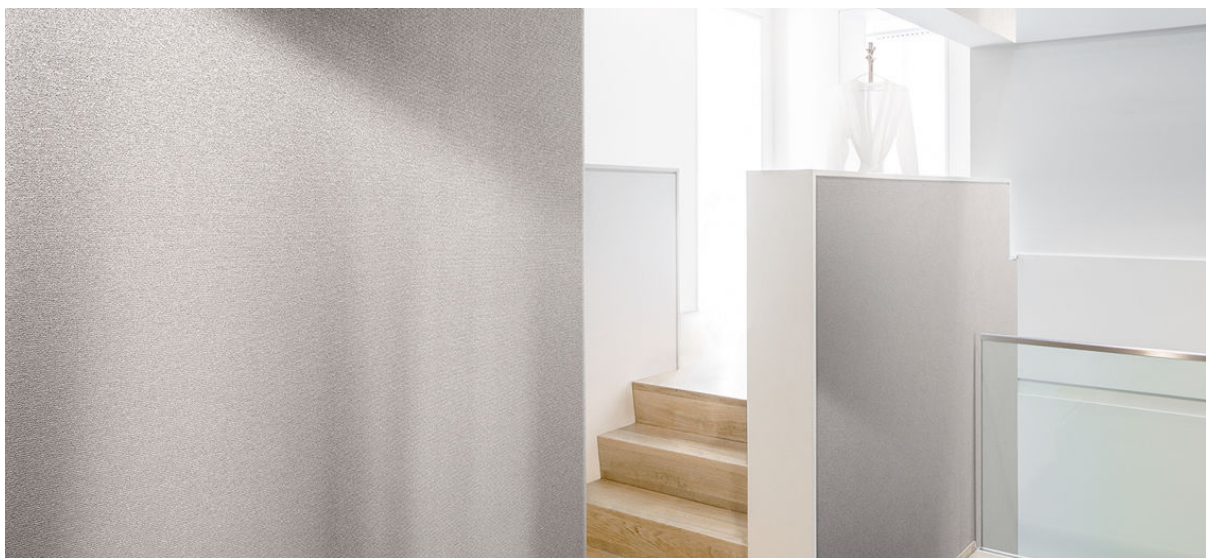


djerba

2006.01 - 2006.14



collection

wallcovering

04

textile

description

width rib with metallic effect

composition

50% polyester / 50% olefin on a paper backing

width

± 130 cm, ± 51 inches

weight

± 325 gr/m², ± 14 oz/yd¹

flame retardancy

EN 13501, D s2 d0

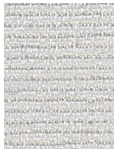

 EN 15102:2007+A1:2011
 12
 1104/305-2011 (18-11-2015)
 wallcovering

REACTION TO FIRE: EN 13501-1

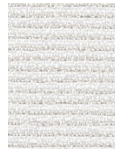


djerba

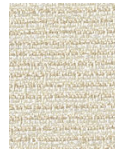
2006.01 - 2006.14



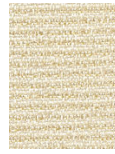
2006.01



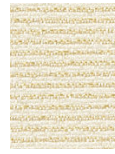
2006.02



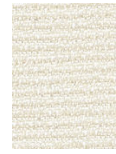
2006.08



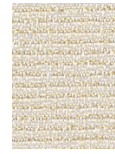
2006.06



2006.11



2006.03



2006.12



2006.14



2006.13



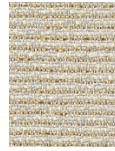
2006.04



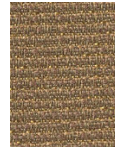
2006.05



2006.07



2006.09



2006.10