

acton

7062.01 - 7062.39



binder

upholstery 01

description

**strong upholstery fabric in a melange look,
in a wide range of colours**

composition

100% flame retardant polyester

width

± 141 cm, ± 56 inches

weight

± 605 gr/m¹, ± 20 oz/yd¹ fabrics

flame retardancy

EN 1021/ 1-2

BS 5852, crib 5

NF P 92 / 503 - 507, M1

DIN 4102, B1

UNI 9175, classe 1.IM

Cal TB 117

NFPA 260, class 1

IMO 2010 FTP part 8

abrasion

ISO 12947-2

90.000 rubs martindale

ASTM D4157

100.000 double rubs wyzenbeek

pilling

ISO 12945-2

4 (scale 1-5)

ASTM D3511

5 (scale 1-5)

colorfastness to crocking

ISO 105-X12

wet 4-5 / dry 4-5 (scale 1-5)

AATCC 8

wet 5 / dry 5 (scale 1-5)

colorfastness to light

ISO 105-B02

6 (scale 1-8)

AATCC 16.3: 40 hours

4 (scale 1-5)

seam slippage

ISO 13936 - 2

warp 3.7 mm / weft 3.7 mm

ASTM D4034

warp 109 lbs / weft 86 lbs

breaking strength

ISO 13937

warp 1380 N / weft 1790 N

ASTM D5034

warp 263 lbs / weft 345 lbs

care

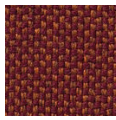


shrinkage: warp -2.7% / weft -0.6%

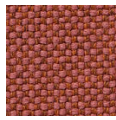


acton

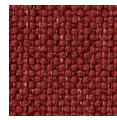
7062.01 - 7062.39



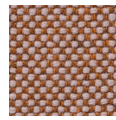
7062.01



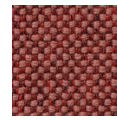
7062.02



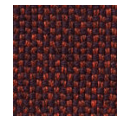
7062.03



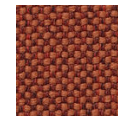
7062.04



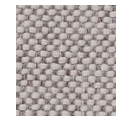
7062.05



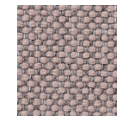
7062.06



7062.07



7062.08



7062.09



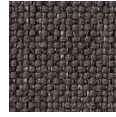
7062.10



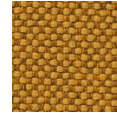
7062.11



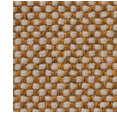
7062.12



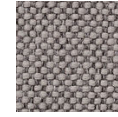
7062.13



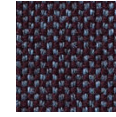
7062.14



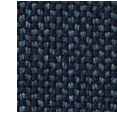
7062.15



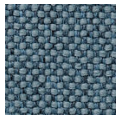
7062.16



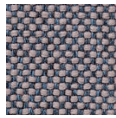
7062.17



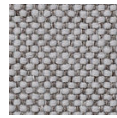
7062.18



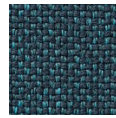
7062.19



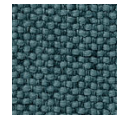
7062.20



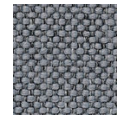
7062.21



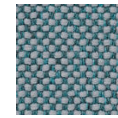
7062.22



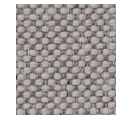
7062.23



7062.24



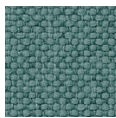
7062.25



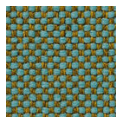
7062.26



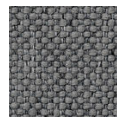
7062.27



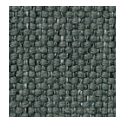
7062.28



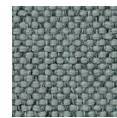
7062.29



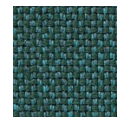
7062.30



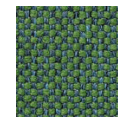
7062.31



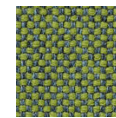
7062.32



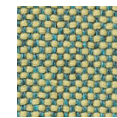
7062.33



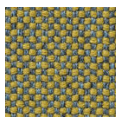
7062.34



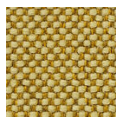
7062.35



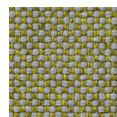
7062.36



7062.37



7062.38



7062.39