

sotra

8070.01 - 8070.24



binder

curtain 02

description

natural silk look curtain fabric, black-out

composition

100% flame retardant polyester acrylic coating

width

± 283 cm, ± 111 inches

weight

± 778 gr/m¹, ± 25 oz/yd¹ fabrics

thermal & visual comfort

EN 14501

class 4 (scale 1-4)

AATCC 148

100% light blocked

flame retardancy

EN 13773, class 1

BS 5867-2, type B

DIN 4102, B1

UNI VF 8456-8457, classe 2

NFPA 701:2010-1

CAN/ULC S109

IMO 2010 FTP part 7

colorfastness to crocking

ISO 105-X12

wet 4-5 / dry 4-5 (scale 1- 5)

AATCC 8

wet 5 / dry 5 (scale 1- 5)

colorfastness to light

ISO 105-B02

5 (scale 1-8)

AATCC 16.3: 60 hours

4.5 (scale 1-5)

care



shrinkage: warp -1% / weft -0.5%

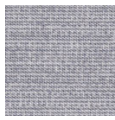


shrinkage: warp -1.2% / weft -0.4%

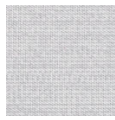


sotra

8070.01 - 8070.24



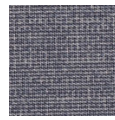
8070.01



8070.02



8070.03



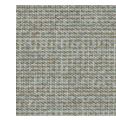
8070.04



8070.05



8070.06



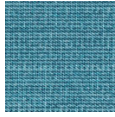
8070.07



8070.08



8070.09



8070.10



8070.11



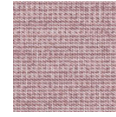
8070.12



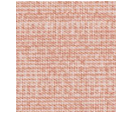
8070.13



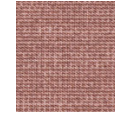
8070.14



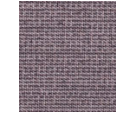
8070.15



8070.16



8070.17



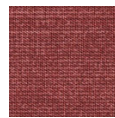
8070.18



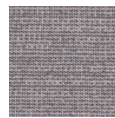
8070.19



8070.20



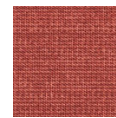
8070.21



8070.22



8070.23



8070.24