

**koro**



8068.01 - 8068.12



binder

**curtain 02**

description

**structured herringbone pattern, curtain fabric, dim out**

composition

**100% flame retardant polyester**

width

**± 294 cm, ± 116 inches**

weight

**± 861 gr/m<sup>1</sup>, ± 28 oz/yd<sup>1</sup> fabrics**

thermal & visual comfort

**EN 14501**

class 2-3 (scale 1-4)

**AATCC 148**

99% light blocked

flame retardancy

**EN 13773, class 1**

**BS 5867 - 2, type C**

**NF P 92 / 503 - 507, M1**

**DIN 4102, B1**

**UNI VF 8456 - 8457, classe 1**

**NFPA 701:2010 -1**

**CAN / ULC S109**

**IMO 2010 FTP part 7**

colorfastness to crocking

**ISO 105-X12**

wet 4-5 / dry 4-5 (schaal 1-5)

**AATCC 8**

wet 5 / dry 5 (schaal 1-5)

colorfastness to light

**ISO 105-B02**

5 (scale 1 - 8)

**AATCC 16.3: 60 hours**

2.5 (scale 1-5)

care



**shrinkage: warp -0.8% / weft -0.4%**



**shrinkage: warp -1.6% / weft -0.7%**



# koro

8068.01 - 8068.12

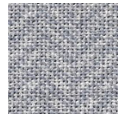
---



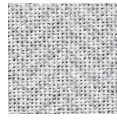
8068.01



8068.02



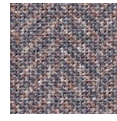
8068.03



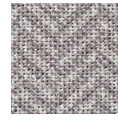
8068.04



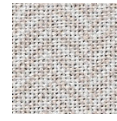
8068.05



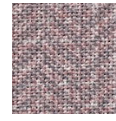
8068.06



8068.07



8068.08



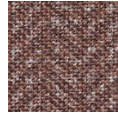
8068.09



8068.10



8068.11



8068.12