

**elba**

8069.01 - 8069.20



binder

**curtain 02**

description

**structured melange look curtain fabric, black out**

composition

**100% flame retardant polyester acrylic coating**

width

**± 277 cm, ± 109 inches**

weight

**± 1075 gr/m<sup>1</sup>, ± 35 oz/yd<sup>1</sup> fabrics**

thermal & visual comfort

**EN 14501**

class 4 (scale 1-4)

**AATCC 148**

100% light blocked

flame retardancy

**EN 13773, class 1**

**BS 5867-2, type B**

**DIN 4102, B1**

**UNI VF 8456-8457, classe 1**

**NFPA 701:2010-1**

**CAN/ULC S109**

**IMO 2010 FTP part 7**

colorfastness to crocking

**ISO 105-X12**

wet 4-5 / dry 4-5 (scale 1-5)

**AATCC 8**

wet 5 / dry 5 (scale 1-5)

colorfastness to light

**ISO 105-B02**

5 (scale 1-8)

**AATCC 16.3: 60 hours**

2.5 (scale 1-5)

care



**shrinkage: warp -0.9% / weft -0.6%**



**shrinkage: warp -1.5% / weft -1.2%**



© Hochschule Niederrhein 2022

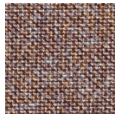
# elba

8069.01 - 8069.20

---



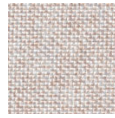
8069.01



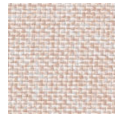
8069.02



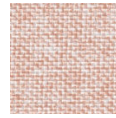
8069.03



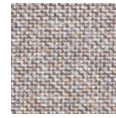
8069.04



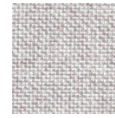
8069.05



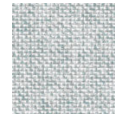
8069.06



8069.07



8069.08



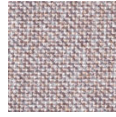
8069.09



8069.10



8069.11



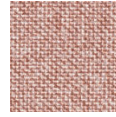
8069.12



8069.13



8069.14



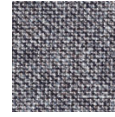
8069.15



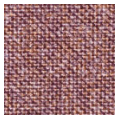
8069.16



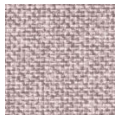
8069.17



8069.18



8069.19



8069.20